



Keenan Drive, Bedworth, CV12 0EH

**SHELDON
BOSLEY
KNIGHT**

LAND AND
PROPERTY
PROFESSIONALS

Property Description

KEEPING KEEN FOR KEENAN

Are you looking for your first purchase? Or even an investment? look no further - we have found the property for you. Recently renovated and ready for furniture to be dropped in, this home offers everything you need.

Briefly comprising; Lounge/diner, kitchen, three bedrooms and bathroom. On the exterior you will find a front and rear garden, complete with side access.

With gas fired central heating and upvc double glazed windows, this home will be perfect for you! Call us now for more information! EPC rating D & Council tax band A



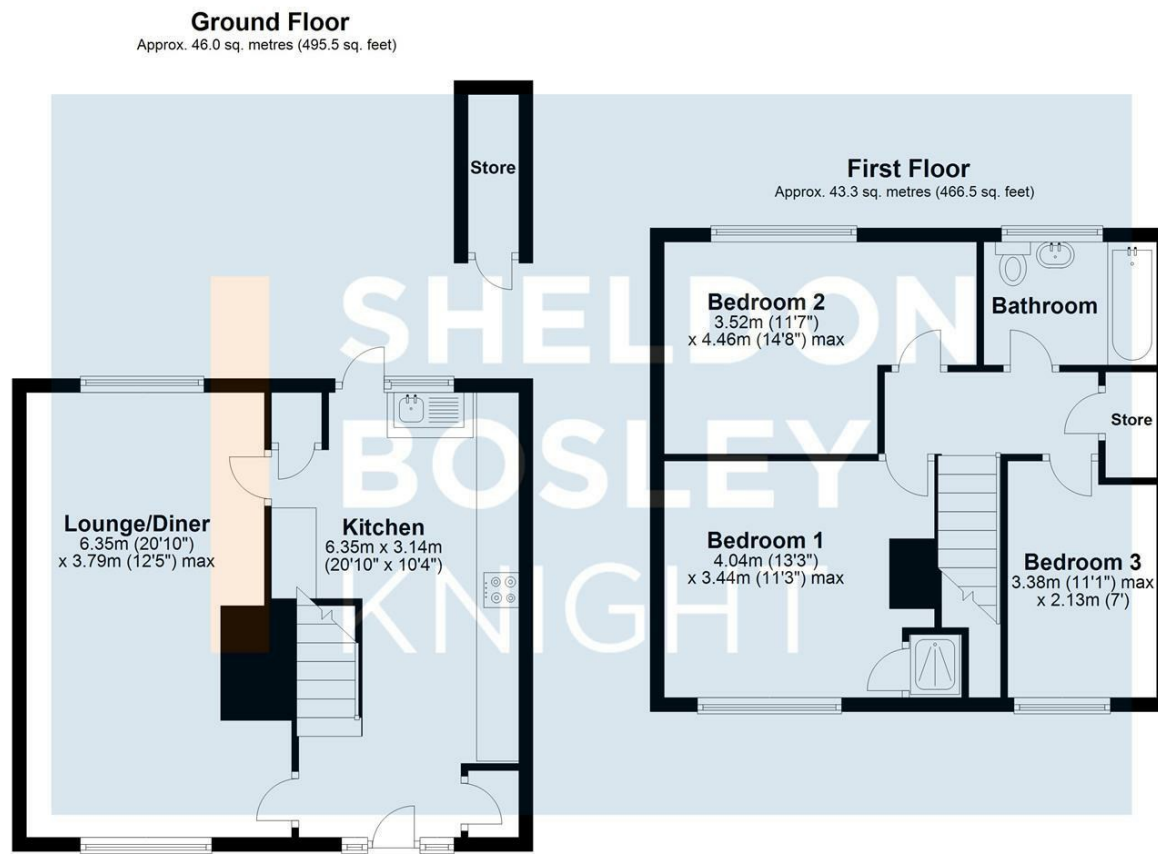


Key Features

- No Onward Chain
- Modern Semi Detached Home
- Three bedrooms
- Recently Renovated
- On Street Parking
- Close By To Local Amenities
- Close By To Local Schools
- EPC RATING D & COUNCIL TAX BAND A

£195,000





Total area: approx. 89.4 sq. metres (962.0 sq. feet)

All efforts have been made to ensure that the measurements on this floorplan are accurate however these are for guidance purposes only.
Plan produced using PlanUp.



EPC Rating - D

Tenure - Freehold

Council Tax Band - A

Local Authority



We routinely refer clients to both our recommended legal firm and a panel of financial services providers. It is your decision whether you choose to deal with these companies. In making that decision, you should know that we receive a referral fee.

**SHELDON
BOSLEY
KNIGHT**

LAND AND
PROPERTY
PROFESSIONALS